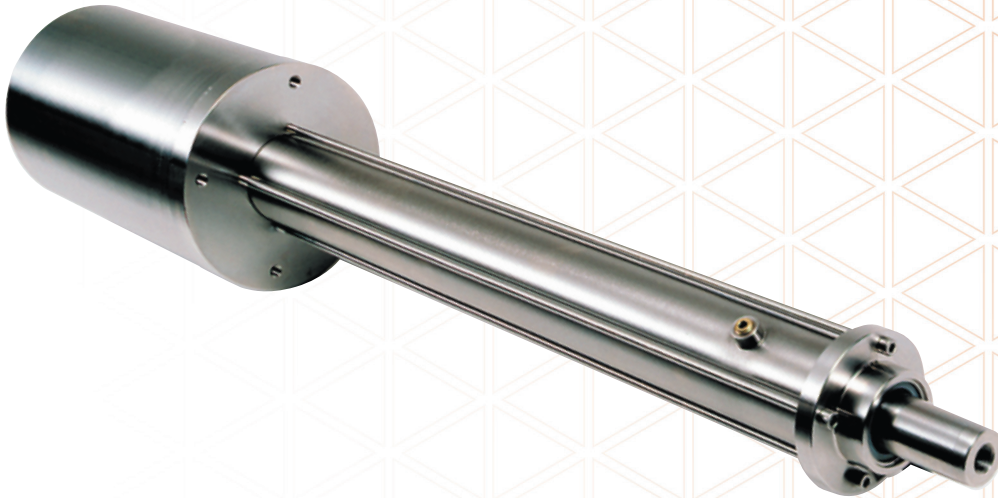


OutBack™ Electro-Mechanical Oscillator



Simplified Control, Easy Installation

Factory preset stroke length (infinitely adjustable up to 12.5") and linear speed are matched to the specific application. The time proven drive produces minimal dwell and optimizes shower fluid coverage. Weighing only 45 pounds (20.4 kg), the entire unit is easily handled and installed. A variety of secure mounting options are available. No control panel installations are required. Simply connect supply wires to the unit's convenient internal power dock and it is ready to run.

A Quality Solution

Proven electro-mechanical action and Posi-Seal technology are combined with high quality materials and components for dependable operation. All OutBack electro-mechanical oscillators are fully vented, preventing leakage due to internal negative pressures. With a tough ballscrew drive and load-spreading multiple bearings, OutBack electro-mechanical oscillators provide a long running, minimal maintenance performance.

Overview



Features

- Lightweight (45 lb / 20.4 kg)
- Convenient internal power dock
- Posi-Seal technology



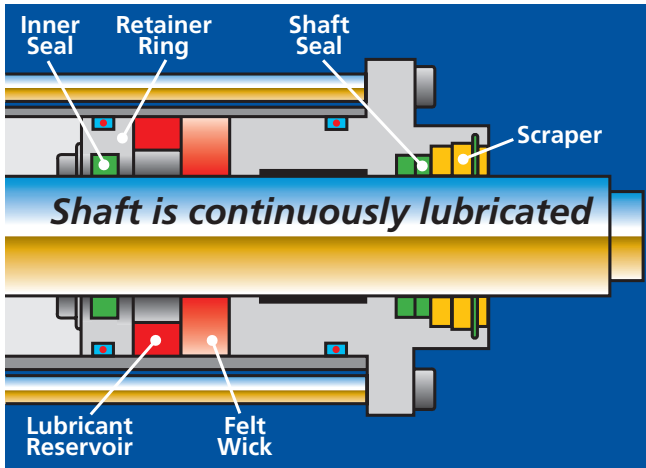
Benefits

- No control panel installations required
- Easy to install
- Low maintenance



Rugged Reliability

The advanced Posi-Seal, a lubricated double seal assembly, and easy-to-maintain scraper protect critical components from damage and moisture ingress. Seal life is extended by the score-resistant smoothly burnished drive shaft.



Options

- Side mount clamp or in-line clevis
- Foot mount to separate brackets
- Flange mount for double tube showers
- Speeds: 4.8" (12.2 cm) per minute, or 2.4" (6.1 cm) per minute
- Breaker box with ground fault protection for multiple units
- Stainless steel drive shaft cover



Specifications

Drive:	Gearmotor and ballscrew assembly
Input:	115 Vac single-phase, 60 Hz, or 230 Vac single-phase, 50 Hz
Size:	Length approx. 34.2" (87 cm) fully retracted
Speed:	3.6" (9.1 cm) per minute
Max. Ambient Temp:	120°F (49°C)
Weight:	45 lb (20.4 kg)
Material:	Stainless steel wetted parts
Thrust:	700 lb (318 kg)

