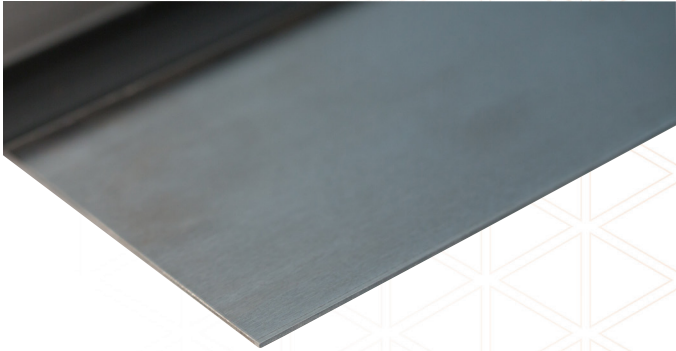


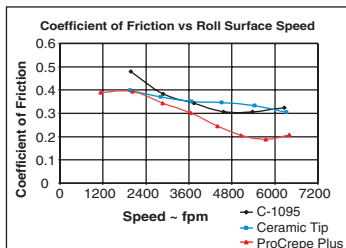
ProCrepe® Plus Creping Blade



Long-Life Creping Blades

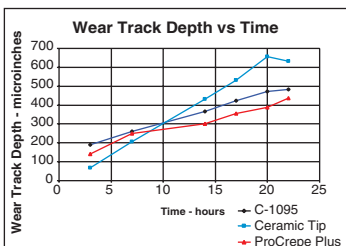
The patented combination of the steel alloy and manufacturing techniques has been specifically developed to produce a creping blade with tightly controlled micro-structure which is resistant to wear but less aggressive to the dryer surface than steel. Specifically, the ProCrepe Plus creping blade is proven to run more consistently even with recycled furnish. The contact area of the ProCrepe Plus creping blade remains sharper for longer than steel and this enables the ProCrepe Plus creping blade to be used to produce a higher more consistent quality sheet for a longer period of time.

Lower Friction than Steel or Ceramic Blades



The contact area and shelf of the ProCrepe Plus creping blade wear at a slower rate than steel. This enables the ProCrepe Plus creping blade to be used to produce a higher more consistent quality sheet for a longer period of time.

Less Wear to the Yankee than Ceramic Blades



The wearing edge of the ProCrepe Plus Creping blade is resistant to wear but only marginally harder than standard steel. This is why ProCrepe Plus creping blades wear the cylinder less than ceramic and provides longer life than standard steel.

Overview



Features

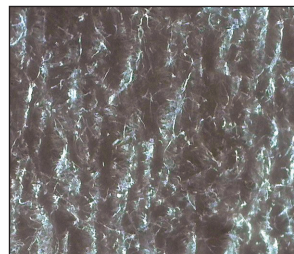
- Patented design using alloys with bi-metal technology
- Non-brittle, tough wear-resistant alloy tip
- Lower operating blade temperature
- Up to ten times the life of steel blades



Benefits

- Increased productivity
- Improved consistency of sheet crepe quality
- Improved Yankee surface conditions
- Reduced energy consumption
- Decreased wear rate by 35% versus standard ProCrepe creping blades

Traditional Steel Blade



ProCrepe Plus Creping Blade

